

CAMDEN CROSSING OF CAROLINE I

1800 square foot minimum

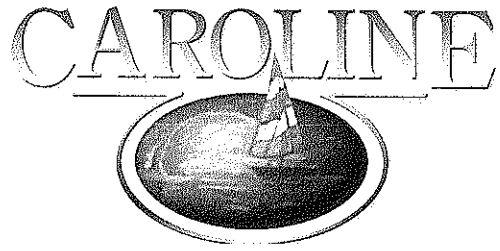
<u>Lot #</u>	<u>Price</u>
350	59,500
351	59,500
352	59,500
353	59,500
354	59,500

2200 square foot minimum

<u>Lot #</u>	<u>Price</u>
368	88,500
369	89,500
377	102,500
378	125,000
379	125,000
381	102,500
382	102,500

Web Site: www.carolinems.com

**For information: Call 601-605-4458
Lots subject to prior sale
Prices subject to change without notice
January 10, 2014 (msj)**



CAMDEN CROSSING OF CAROLINE PHASE II

1800 square foot minimum

<u>Lot #</u>	<u>Price</u>
308	49,000
309	49,000
310	49,000
311	49,000

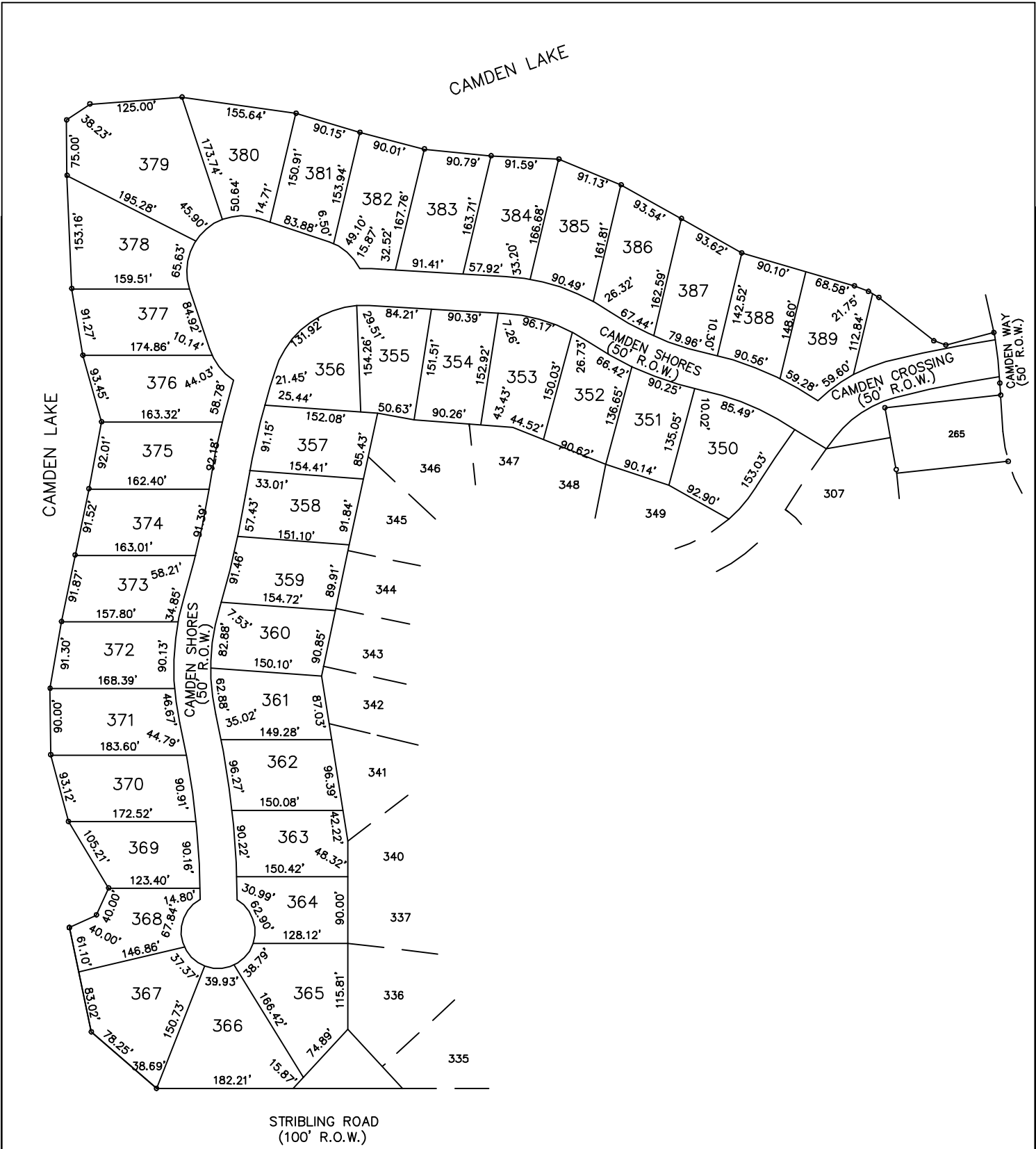
CAMDEN CROSSING OF CAROLINE PHASE III

1800 square foot minimum

<u>Lot #</u>	<u>Price</u>
322	49,000
323	49,000

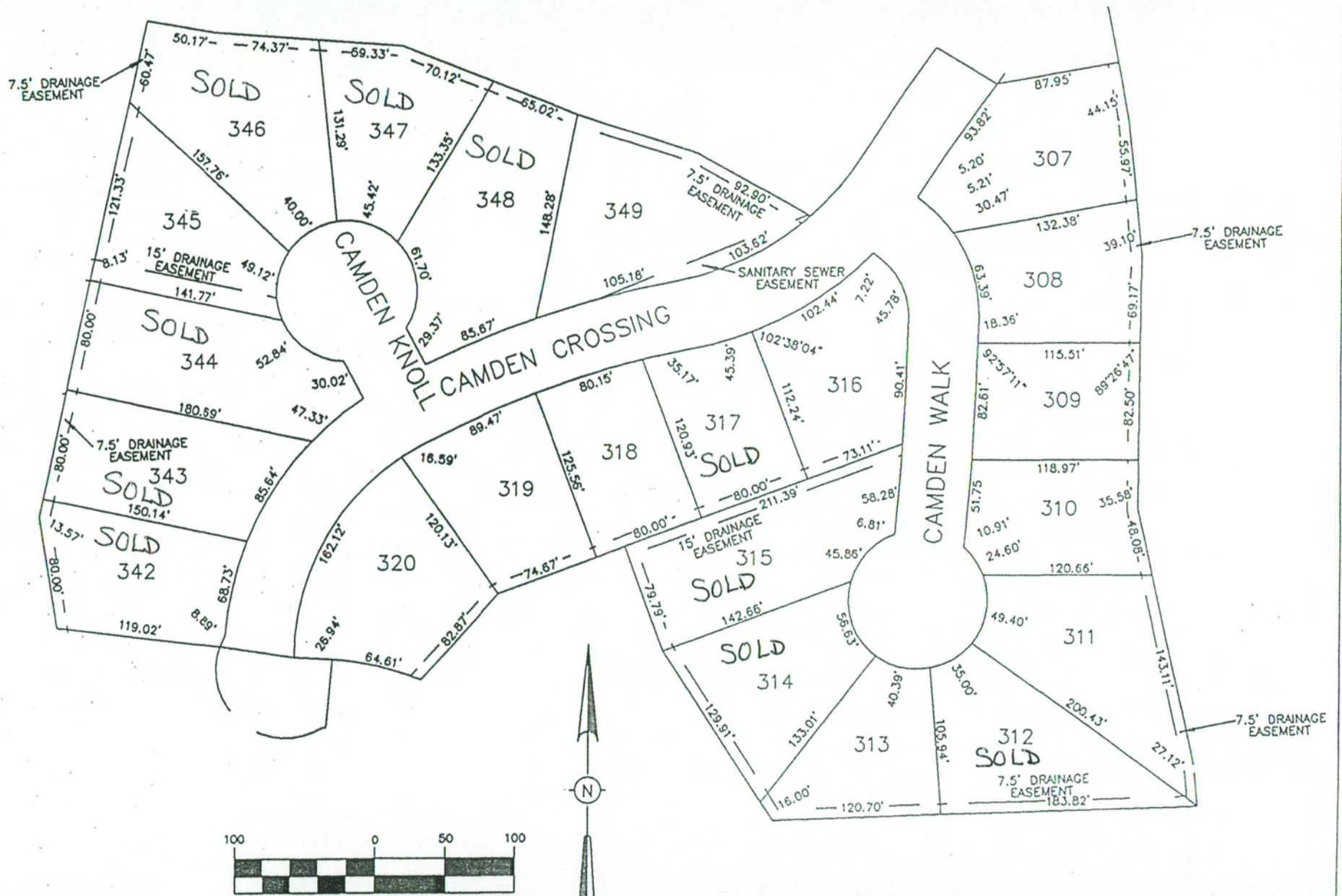
Web Site: www.carolinems.com

For information: Call 601-605-4458
Lots subject to prior sale
Prices subject to Change Without Notice
January 10, 2014 (msj)

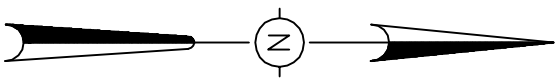
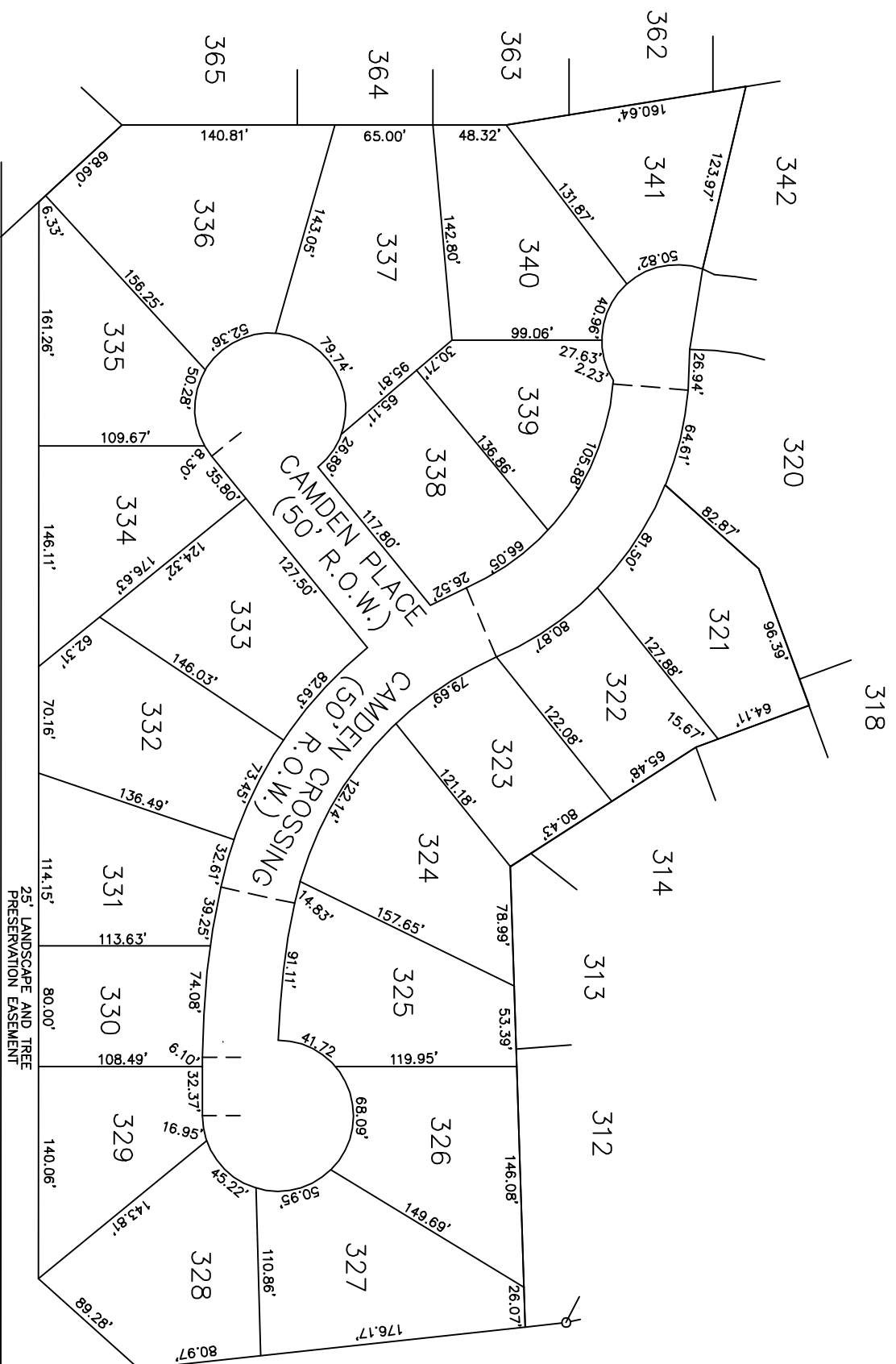


MARKETING PLAT
 OF
 CAMDEN CROSSING OF CAROLINE I
 DEVELOPED BY:
 CAROLINE, LLC

CAMDEN CROSSING OF CAROLINE II



1 inch = 100 ft.



SALES EXHIBIT
 OF
 CAMDEN CROSSING OF CAROLINE III