

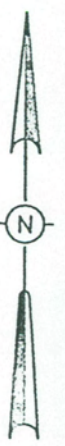
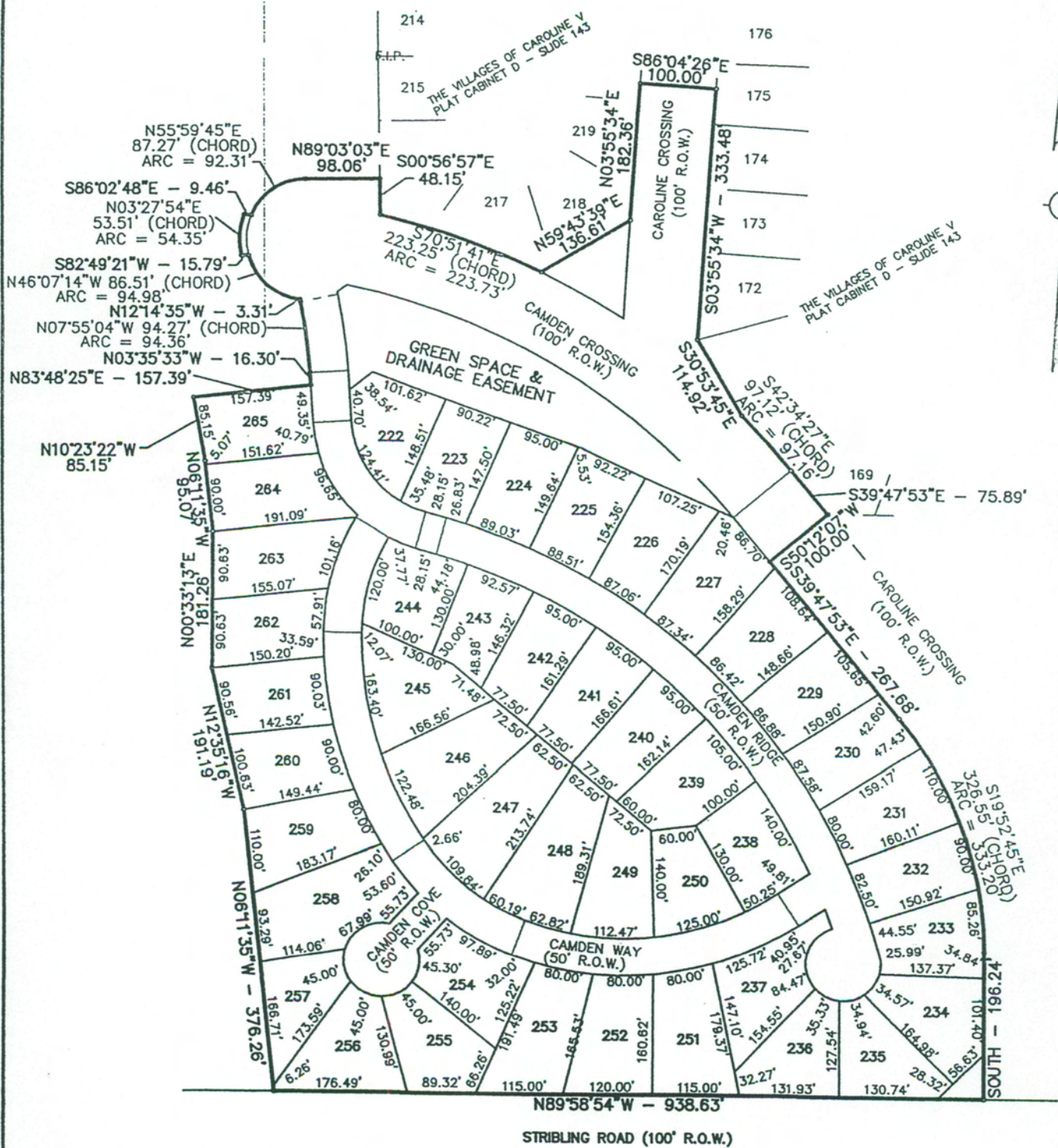
CAMDEN RIDGE OF CAROLINE

Minimum 2800 square feet

<u>Lot #</u>	<u>Price</u>	<u>Lot #</u>	<u>Price</u>
226	60,500	249	63,500
227	60,500	250	61,000
228	61,000	253	61,000
230	60,500	254	60,500
232	61,000	255	60,500
234	60,500	256	61,000
235	60,500	257	61,000
236	60,500	258	61,000
237	61,000	259	61,000
238	63,500	260	63,500
246	63,500		
247	63,500		
248	63,500		

Web Site: www.carolinems.com

For information: Call 601-605-4458
Lots subject to prior sale
Prices subject to change without notice
January 10, 2014 (msj)



CAMDEN RIDGE OF CAROLINE
 SITUATED IN THE
 SOUTHEAST 1/4 OF THE NORTHWEST 1/4, THE NORTHEAST 1/4
 OF THE SOUTHWEST 1/4, THE NORTHWEST 1/4
 OF THE SOUTHEAST 1/4, AND THE SOUTHWEST 1/4 OF THE NORTHEAST 1/4
 OF SECTION 14, TOWNSHIP 8 NORTH - RANGE 1 EAST
 MADISON COUNTY, MISSISSIPPI